

Thank you for showing interest in the Performing Arts Center's largest of four performance spaces. **The Concert Hall** is capable of handling any type of event from opera or dance to large multimedia presentations.

The Performing Arts Center is a full service performance facility. The Center maintains a central inventory of equipment for most theatrical and concert needs. Due to the nature of the facility as a four theatre complex we do not publish inventory lists. To ensure that the needs of your production are met we request that you communicate your requirements to us as soon as possible, so that we can make the appropriate allocations. You will find, listed by department, the general types of equipment that we carry. For further information please feel free to contact the Production Office.

The plans of the theatre included in this packet have been reduced several times to make this format possible. These drawings are not to scale, however, all critical dimensions are included. AutoCAD drawings are available upon request. A lineset schedule is attached with distances from the plasterline. Scale drawings (1/4" = 1'0"), plan and section, are available by request.

These technical specification sheets should answer many of the questions you might have about the Performing Arts Center. For further inquiries about space or equipment availability, please contact the Production Office at (914) 251-6262, fax (914) 251-6220.

The Performing Arts Center's address is

Mailing:  
Performing Arts Center  
Purchase College  
MPO 140  
Purchase, NY 10577

Shipping:  
Performing Arts Center  
735 Anderson Hill Rd.  
Purchase, NY 10577

Quick Reference Index:

Audio	pg.	8	Labor	pg.	3
Contact List	pg.	9	Laundry	pg.	4
Deck, Lifts, Flooring	pg.	2	Lineset Schedule	pg.	16
Dimensions	pg.	5	Loading Dock Access	pg.	2
Directions	pg.	13-14	Local Information	pg.	10-12
Drapery	pg.	5	Organ Room	pg.	3
Dressing Rooms	pg.	4	Rigging	pg.	2
Electrics	pg.	6-7	Seating Capacity	pg.	4
General Equipment	pg.	3	Special Effects	pg.	4
House Plot	pg.	17	Staging	pg.	2-4
			Telecommunications	pg.	4

## **THE CONCERT HALL STAGING:**

### **Loading Dock Access:**

The Concert Hall has two loading docks, the primary one accessed through Parking Lot W1. Both are truck level, and can handle one 45' tractor-trailer each. Stage right in W1 is a blind side back in. Stage left, via the paint shop in parking lot W2, is a left hand back in, and is available **by prior arrangement only**. Trucks may not park in the loading docks. Overnight parking for trucks is available by prior arrangement in Parking Lot W2. During the winter months, trucks are not permitted to idle in the loading docks due to the location of the air intakes for the building.

### **Stage Deck, Stage Lifts, Flooring:**

The stage deck is a semi-sprung floor with a newly resurfaced Stagelam phenolic resin covering. Due to the nature of this material, lagging and screwing are strongly discouraged and permitted only under special circumstances with prior written approval from the Production Manager. All holes put into the deck **must be predrilled** to avoid cracking of the surface.

The Concert Hall is equipped with 2 full stage lifts downstage of the proscenium. Normally the downstage lift holds two rows of removable seating, and the upstage lift plays at stage level as an extended apron. There is no seating available for the upstage lift. For loading in/out and adjusting orchestra pit levels, the lifts can operate independently, but must remain stationary during performances.

The theatre has a 60' wide Harlequin Studio dance floor. There is enough flooring to cover the playing depth of our theatre upstage of the proscenium. The floor is black and non-reversible.

### **Rigging:**

The theatre is equipped with a single purchase counterweight system. Arbor capacity is 1200 lbs. above batten weight. The length of each batten is 60'. There are 4' batten extensions in limited availability. There are 66 linesets in this theatre, 3 of them are dedicated to carrying ceiling pieces for the orchestra shell. You will find our current lineset schedule attached. The house curtain is red and a guillotine type, operated from the deck stage left. There is a center split, but it does not travel.

### **Labor:**

The Center is a non-union house. We employ professional freelance stage crew and wardrobe personnel, and many standard labor rules apply. For shows travelling with a "yellow-card" we are under the jurisdiction of the New York City and Westchester IATSE Local 1. If you are unfamiliar with the area please contact the Production Office and we will put you in touch with the local Business Agent.

### **General Equipment:**

Each theater is equipped with a variety of A-frame ladders and a personnel lift.

The PERFORMING ARTS CENTER owns concert chairs, bass stools, music stands and lights for orchestra use. There are 4' x 8' risers in heights of 8", 16" and 24". **We do not own choral risers.** The Concert Hall also houses an acoustical concert shell which is available by prior arrangement. It has a variety of possible configurations depending on orchestra size.

The PERFORMING ARTS CENTER also maintains an assortment of concert quality Steinway pianos which are available by prior arrangement.

The house maintains a **lecture package** including a lectern, chairs, and tables with appropriate skirting, available on request. The Concert Hall does not house a permanent projection screen, however, one may be arranged upon request.

### **Organ Room:**

The Organ Room, which is located stage right adjacent to the theatre, can be used as a rehearsal room or performance space **by prior request**. Maximum occupancy is 49. The available floor space is approximately 52' x 48'. The floor is maple tongue and groove and there are mirrors and dance bars to accommodate dance rehearsals. The PERFORMING ARTS CENTER can also supply a dance floor for this area, available through prior arrangement. **No screws, lags, or nails are permitted in this floor at any time. There are no exceptions to this policy.**

#### **Flentrop Organ:**

The theatre has, normally in storage, a large, movable, tracker organ. The organ can be moved onto the Concert Hall Stage for performances, through prior arrangement. The organ was built by Flentrop in 1966 and has 61 ranks. For additional information and specifications, please contact the Production Office.

**Dressing Rooms:**

Dressing rooms for this theatre are located one floor below stage level, and accessible via stairs stage right and stage left. All rooms have makeup mirrors and lights, tables and chairs. There are restroom facilities and showers located in each dressing room. Rooms break down as follows:

- 2 chorus rooms.....11 people each.
- 2 chorus rooms.....9 people each.
- 10 private rooms.....2 people each.

**Laundry:**

There are shared laundry facilities located in an adjacent section of the building which must be reserved for use in advance of load-in. We can supply washing, drying and ironing facilities. Portable steamers are available through prior arrangement.

**Miscellaneous:**

**Seating Capacity:**

Orchestra	732
Grand Tier	232
Balcony	<u>336</u>
	1300
Pit rows	<u>72</u>
	1372

**Telephones:**

Stage telephones for The Concert Hall are as follows:

- Backstage (914) 251-6246
- Lighting booth (914) 251-6243
- Audio booth (914) 251-6244

These numbers are for incoming and on-campus outgoing calls only. There are pay phones for long-distance calling located throughout the building. A private outgoing line installed for the length of your stay can be provided by the Production Office with 5 working days notice. There is a fee for installation and an itemized bill of local and long distance calls will be generated for the line.

**Cellular Phone Coverage:**

Most cell phones work through out our buildings

**Special Effects:**

Any special or pyrotechnic effects must be approved by the production office prior to load in. All necessary and appropriate certificates must be presented upon arrival.

## The Concert Hall Dimensions

Loading Dock Doors SR:	9'-9"h x 7'-9"w	2.97m x 2.36m
Loading Dock Doors SL	10'-0"h x 12'-0"w	3.05m x 3.66m
Dock Height SL & SR:	2'4"	.7m
Control Booth to Plaster Line:	82'-0"	25m
Follow Spot Booth to Plaster Line:	85'-0"	25.91m
2 <sup>nd</sup> Bridge to Plaster Line:	85'-0"	25.91m
1 <sup>st</sup> Bridge to Plaster Line:	60'-0"	18.29m
FOH Balc Rail to Plaster Line:	61'0"	18.59m
Proscenium Width:	53'-10 1/2"	16.42m
Proscenium Height:	36'-0"	10.97m
Total Playing Depth:	73'-7"	22.43m
	<i>(US lift inc.)</i>	
Stage Depth:	54'-9"	16.69m
	<i>(Plaster line to back wall)</i>	
Stage Lifts at Centerline:		
Downstage-depth:	6'-8"	2.03m
Upstage-depth:	11'-10"	3.60m
Apron at Centerline Depth:	7'-0"	2.13m
Stage Left Wing:	24'-6"	7.46m
Stage Right Wing:	58'-6"	17.83m
Grid Height:	83'8"	25.50m
High Steel:	90'8"	27.63m
Batten Working Height:	6'-3"	1.9m
Batten Working Weight:	1200 lbs.	589.67kg
Batten Length:	60'-0"	18.28m
Batten Extension	4'-0"	1.22m
Masking Opening:	45'0"	13.72m

## **Lighting Angles:**

*Approximate measurements from hanging position to plaster line, center stage*

First Bridge	48°
Second Bridge/Follow Spot Booth	31°

## The Concert Hall Drapery Inventory:

Black Legs	14	15'w x 40'h	4.57m x 12.19m
Black Border	3	60'w x 20'h	18.29m x 6.10m
Black Border	4	60'w x 15'h	18.29m x 4.57m
Blackout Cloth	2	60'w x 40'h	18.29m x 12.19m
Tab Curtains	8	6'w x 40'h	1.83m x 12.19m
Half-Traveler	2	34'w x 40'h	10.36m x 12.19m
White Scrim	1	65'w x 45'h	19.81m x 13.72m
Black Scrim	1	65'w x 45'h	19.81m x 13.72m
Natural Bounce	1	65'w x 45'h	19.81m x 13.72m

## **The Concert Hall Electrical:**

### **Control:**

The Concert Hall is equipped with an ETC Insight 3 Console. It has 108 submasters, and can control 512 channels and 1536 dimmers. The control booth is located at the rear of the grand tier. It uses an Expression 2-line Remote Focus Unit, which is available upon request.

*DMX In* ports are available for any touring consoles which may need to access the house system. They are located as follows:

Control booth  
Tech table position (center orchestra)  
Downstage left

There are three *DMX In* ports located at each position, allowing control of the house system (DMX addresses 1-582) and 954 additional DMX addresses.

*DMX Out* ports are available to add additional dimmers, scrollers, moving lights, and any other DMX-addressable equipment. They are located as follows:

FOH - 1st Bridge, SL and SR  
Midrail - SL and SR  
Stage level - DSL, DSR, and USL.

### **Company Power:**

There are two 400 amp three phase, 208v disconnects in the stage area, distributed as follows:

- 1) USL on the stage level
- 2) USR or USL at the mid-rail (parallel)

These disconnects are equipped with lugs to accept bare-end tie-ins.

In addition, there are four 400A, 208v company switches available in the dimmer room. These four disconnects draw from the same power that feeds the theater's dimming system. The combined load on the company switches plus the house system cannot exceed 1500 amps/phase. These disconnects are equipped with cam-lock connectors which are **NOT ground & neutral reversed**.

### **House Dimmers and Circuitry:**

The Concert Hall has 558 ETC dimmers (dimmer-per-circuit), configured as follows:

The house circuitry consists of 20A (to 2.4 Kw dimmers) and 50A (to 6.0 Kw dimmers) 2p&g connectors. If you anticipate using any 50 amp circuits, please check with the Master Electrician for availability of 50A cable. A scaled circuit plot for the theatre is available upon request.

**House Lights:**

House lights are dimmable from the control booth, and from downstage left and downstage right. House lights may also be controlled through the control console, or any touring console with DMX protocol.

**House Lighting Units:**

The PERFORMING ARTS CENTER maintains a large inventory of ETC and Altman instruments which may be drawn upon by the user. A list of available inventory may be obtained by contacting the Master Electrician, please see contact list.

**House Hang:**

Attached you will find a copy of our standard house plot with all pertinent information. This plot will be in the air upon your arrival in the theatre unless other arrangements have been made with the Production Office. The units carry no color and are normally focused for a standard orchestral set-up. Please note, the overhead units are striplights only, intended to simply to illuminate the stage area.

## **The Concert Hall Audio:**

The Concert Hall has a three channel house speaker system as well as a delay fill system for the balcony. There is a center speaker cluster permanently mounted above the proscenium, consisting of four and one. The KF-300's are bi-amplified three way cabinets with a 12-inch low frequency driver and a passive crossover for the mid and high frequency drivers. The subwoofer has a single 18" driver and the cabinet is located between the upper KF-300's in the form of an array.

The signal for the center cluster also feeds three digitally delay aligned, hung from the rear of the first lighting bridge, which provide improved intelligibility for the balcony seats.

The stereo left and right pair consists of two separate full range cabinets, also mounted above the proscenium. These cabinets are BagEnd Modular Sound AF-1C speakers. Each cabinet contains an 18" low frequency driver, a 12" midrange, and a 120 degree bi-radial HF horn. The center cluster and delay speakers are powered by Crown Macrotech series amplifiers. The subwoofer and low frequency sections are powered by MA3602s, while the high frequency section is powered by a MA2402. The delay cabinets are powered by a pair of MA1202s. The stereo cabinets are powered by a Crest 7001. The three patchable house monitor / auxiliary amplifiers are also Crown MA1202s.

The house console is a 32+4 X 8 X 2 X 1 Crest X-VCA. It has eight VCA groups, automated muting, fully parametric EQ on the mono input channels and main outputs, eight auxiliary sends, and an 11x 4 matrix output section.

In addition to the console, the house system is also equipped with a Yamaha SPX2000 effects processor, a Tascam MD-CD1 combination CD player and MiniDisc player / recorder, as well as a Tascam 302 dual cassette deck. For system processing, there are ten channels of Ashly Protea Series II digital EQ. There are two BSS FDS336 MiniDrives. One is dedicated to processing the center cluster and delay fills, while the other is fully patchable for monitor or other auxiliary usage. The console and associated electronics are located in the control booth at the rear house right side of the Grand Tier level.

The main house snake has 54 channels with parallel boxes located on the stage left and stage right proscenium walls. Each box, as well as the control booth, also has a Ramlatch panel mount connector (wired to the Ramlatch standard). There are six audio tie lines that run from the theater patchbay to a breakout box in the booth at the rear center of the Orchestra level. Additional speaker lines and mic jacks are located throughout the house and stage areas. There are twelve audio tie lines running from the theatre's patch bay to a central patch point for the facility that can be used to cross-connect audio from various spaces within the facility. There are two 20 amp AC lines running from the control booth to the stage right proscenium wall that can be used to feed power from the booth circuit panel to equipment located backstage. The AC lines are terminated with L5-20 connectors, with 5-20 ("Edison") adapters available.

**Performing Arts Center Contact List:**

Production Office Main	914-251-6262
Production Office Fax	914-251-6220
<b>Christy Havard</b>	
Production Manager	914-251-6266
<b>Peter Specce</b>	
Asst. Production Manager	914-251-6221
<b>Peter Wylie</b>	
Lighting Supervisor	914-251-6258
<b>Justin Herminghouse</b>	
Audio Supervisor	914-251-6240
Booking Office	914-251-6180
Box Office – Sales/Ticket Purchases	914-251-6200
Box Office – Manager	914-251-6212
Concert Hall Backstage	914-251-6246
Pepsico Backstage	914-251-6250
Recital Hall Backstage	914-251-6285

Performing Arts Center Website: [www.artscenter.org](http://www.artscenter.org)

Site contains venue information and e-mail links to most of the center's staff.

**Local Information:**

**Airports:**

The nearest airport to the PERFORMING ARTS CENTER is Westchester County Airport, approximately 2 miles away. Hertz, National, and Avis rental cars are available here. LaGuardia, JFK and Newark are all equally accessible, approximately 50 miles from Purchase. For ground transportation inquire in the terminal at the Connecticut Limousine desk, destination Rye, NY.

**Car Rentals at Westchester County Airport:**

<b>AVIS</b> (914) 997-2300	<b>Hertz</b> (914) 948-1016	<b>National</b> (914) 946-9080
-------------------------------	--------------------------------	-----------------------------------

**Taxi services:**

<b>Harrison Taxi</b> (914) 835-3400	<b>Rye Taxi &amp; Cab</b> (914) 967-0500
<b>Palmeri Limo</b> (914) 337-1347	<b>Connecticut Limo</b> (800) 472-5466
<b>Lexington Limo</b> (914) 761-0515	
<b>Westchester Car &amp; Limo Airport Service</b> (800) 452-4225	

**Hotels:**

*Deluxe-*

**Doral Arrowwood**  
Anderson Hill Rd.  
Rye Brook, NY 10573  
(914) 939-5500 phone  
(914) 935-6615 Fax  
<http://www.arrowwood.com>  
Approx. (3) minutes from venue  
Rates: \$125 and up

**Renaissance Westchester Hotel**  
80 West Red Oak Lane  
White Plains, NY 10604  
(914) 694-5400 phone  
(914) 694-5616 Fax  
Approx. 15 minutes from venue  
Rates: Starting at \$170

*Moderate-*

**Courtyard Marriott**  
631 Midland Avenue  
(914) 921-1110 phone  
(914) 921-2446 fax  
Rye, NY 10580  
Approx. 10-15 minutes from venue

**Hampton Inn**  
200 Tarrytown Rd.  
Elmsford, New York 10523  
(914) 592-5680 phone  
(914) 592-6727 fax  
Approx. 15-20 minutes from venue  
Rates: \$109-\$179

**Hotels cont'd:**

**Summerfield Suites Westchester:**

101 Corporate Park Drive  
White Plains, New York 10604  
(914) 251-9700  
Rates: Average of \$159

**Wellesley Inn:**

Rt. 684, exit 3 & Rt. 22  
Armonk, New York  
(914) 273-9090  
Fax (914) 273-9090 ext. 616 call first  
Rates: Starting at \$159

**Westchester Marriott**

670 White Plains Rd.  
Tarrytown, New York 105791  
(914) 631-2200 Fax (914) 631-7891  
Rates: \$185 and up

**Crowne Plaza White Plains:**

66 Hale Avenue  
White Plains, New York 10604  
(914) 682-0050 Fax (914) 682-0405  
Rates: \$150 and up

**The Rye Town Hilton**

699 Westcheser Avenue  
Rye Brook, New York 10573  
(914) 939-6300 Fax (914) 939-5328  
Rates: Starting at \$150-\$220

**Esplenade:**

South Broadway & Lyon  
White Plains, New York 10604  
(914) 761-8100 Fax (914) 761-9015  
Rates: average of \$150

**On Campus Dining:**

Campus Center North – Cafeteria  
Mon – Fri 8:00am – 10:00pm  
Sat – Sun 10:00am – 7:00pm

**Restaurants:**

*Hours Subject to Change*

**Hilltop Restaurant**

American  
Anderson Hill Rd.  
Purchase, NY  
11:30am – 11:30pm  
(Sundays until 11:00pm)  
(914) 253-9680

**Cobblestone Restaurant**

American  
Anderson Hill Rd  
Purchase, NY  
11:30am – Midnight  
(914) 253-9678

**Purchase Deli**

630 Anderson Hill Rd.  
Purchase, NY  
6:00am – 7:00pm Mon - Fri  
6:00am – 3:00pm Sat  
Closed Sun  
(914) 253-9127  
(914) 251-1126 Fax

**Delivery:**

**Racanelli Pizzeria**

Family Italian  
Rye Ridge Shopping Complex  
Rye Brook, NY  
11:00am – 10:30pm  
(914) 937-2511  
(914) 937-8594 Fax

**Grocery Stores:**

**D'Agostino's Supermarket**

142 South Ridge  
Port Chester, NY  
(914) 935-3324

**Office Supplies:**

**Staples**

515 Boston Post Road  
Port Chester, NY  
(914) 937-8193

**Kinko's Copies**

147 Mamaroneck Ave.  
White Plains, NY  
(914) 684-2679

**Dry Cleaning:**

**Poningo Cleaners**

145 Irving Ave  
Port Chester, NY  
(914) 939-4067

**Flowers:**

**House of Flowers**

229 Marmaroneck Avenue  
Marmaroneck, NY  
(914) 698-2522

**Dry Ice:**

**Artic Glazier, Inc.**

500 Fenimore Road  
Mamaroneck, NY  
(914) 698-8910

**Massage Therapist Services:**

Upon prior arrangement and advance notice, a massage therapist may be available on campus. The phone number for more information is 914-251-6548.

**Hospitals:**

**White Plains Hospital**

Post Road & Davis Avenue  
White Plains, New York  
(914) 681-0600

**Rye Walk-in Medical Center**

150 Purchase Street  
Rye, New York  
(914) 967-3266  
M-F 8am-7pm, Sat 9am-2:30pm, Sun 10am-2:30pm

**Hardware / Lumber / Staging Supplies:**

**Feinsod Hardware Co.**

43 North Main  
Port Chester, NY  
(914) 939-3872

**Home Depot**

20 Corporate Dr.  
Yonkers, NY  
(914) 963-3003  
M-Sat 6am-10pm, Sun 7am-8pm

**Port Chester Lumber**

*Delivery*  
550 Halstead Ave.  
Harrison, NY 10528  
(914) 835-0750

**Tulnoy Lumber, Inc.**

1620 Webster Ave.  
Bronx, NY 10457  
(718) 299-2002

**Mount Vernon Iron Works**

130 Miller Place  
Mount Vernon, NY  
(914) 668-7064

**Empire Tools**

21 Abendroth Avenue  
Port Chester, NY  
(914) 937-1771  
M-F 8am-5pm  
Closed weekends

**Grainger**

505 Saw Mill River Rd.  
Elmsford, NY 10523  
(914) 347-6800  
M-F 7am-5pm  
Closed weekends

**BMI Supply**

(800) 670-4264

**Forklift / Aerial Lift Rentals:**

**Superior Handling**

530 South 4<sup>th</sup> Ave  
Mount Vernon, NY  
(914) 667-5575  
M-F 7am-6pm  
Open some Saturdays

**United Rentals Corp.**

185 Thorpe Street  
Farifield, CT 06430  
(800) 543-5438

**Rental Houses:**

**Musical/Instrumental:**

**Ayers Percussion**

(212) 582-8410

**HB Group (Audio)**

60 Dodge Ave  
North Haven, CT  
(800) 331-1804

**Audio:**

**Sound Associates**

(914) 963-3452

**Carroll Music**

(212) 868-4120

**Altman Stage Lighting**

57 Alexander  
Yonkers, NY  
(914) 476-7987

**Shaboo Productions (Backline)**

(800) 423-5700

## **Directions to Purchase College, SUNY Performing Arts Center:**

### **Accessed via Parking Lot W1:**

Central Lobby; Stage and Administrative enterences; Pepsico loading dock; Concert Hall main loading dock.

### **Accessed via Parking Lot W2:**

Paint Dock (Concert Hall alternative loading dock); Recital Hall loading dock; overnight truck parking (with prior approval).

### **By Car:**

#### **From New York City, southern Westchester, and Long Island:**

Take the Hutchinson River Parkway, north to Exit 28, Lincoln Avenue. Turn left onto Lincoln Avenue and proceed approximately one mile to Anderson Hill Road (2<sup>nd</sup> traffic light). Turn right onto Anderson Hill Road. The campus is immediately on the left.

#### **From Rockland County and northern New Jersey (via the TappanZee Bridge):**

Take I-287 (Cross Westchester Expressway) to exit 8E. Shortly after first traffic light, bear left onto Anderson Hill Road. Proceed approximately 2.5 miles. The campus is on the left, just after intersection at Lincoln Avenue.

#### **From northern Westchester:**

Take I-684 south to Exit 2 (Route 120), drive over the bridge and turn right onto Route 120 south (Purchase Street). Follow Route 120 south, 3.2 miles to Anderson Hill Road (1<sup>st</sup> traffic light) and turn left. Take Anderson Hill Road to 2<sup>nd</sup> traffic light. The campus is on the left, just after intersection at Lincoln Avenue.

#### **From Connecticut, via the Merritt Parkway (which becomes the Hutchinson River Parkway in New York State):**

Proceed south to the New York Exit 28, Lincoln Avenue (Note: Do not get off at Exit 28 in Connecticut). Turn right onto Lincoln Avenue and proceed approximately one mile to Anderson Hill Road (2<sup>nd</sup> traffic light). Turn right onto Anderson Hill Road. The campus is immediately on the left.

#### **From Connecticut, via I-95:**

Take I-95 south then take I-287 west to Exit 9N (HutchinsonRiver Parkway). Take Hutchinson River Parkway North to Exit 28, Lincoln Avenue. Turn left onto Lincoln Avenue and proceed approximately one mile to Anderson Hill Road (2<sup>nd</sup> traffic light). Turn right onto Anderson Hill Road. The campus is immediately on the left.

**By Train:**

Metro North Schedule Information:

Phone: (800) METRO-INFO

(212) 532-4900

Website: [www.mta.nyc.ny.us](http://www.mta.nyc.ny.us)

The White Plains train station maintains a more frequent schedule.

The last train out of White Plains is at:       Midnight

The last train out of Port Chester is at:       12:30am

From New York City via rail from Grand Central Station, take the Harlem line/Metro North to White Plains. Board the Anderson Hill Road bus No. 12 or take a taxi to campus. Alternatively, take the New Haven Line/Metro North to Rye and take a taxi to campus.

**By Bus:**

Bus/Westchester: (914) 682-2020

Take the No. 12 bus northbound from White Plains or southbound from Yorktown, Mount Kisco, or Armonk. Buses leave approximately every hour, Monday through Saturday.

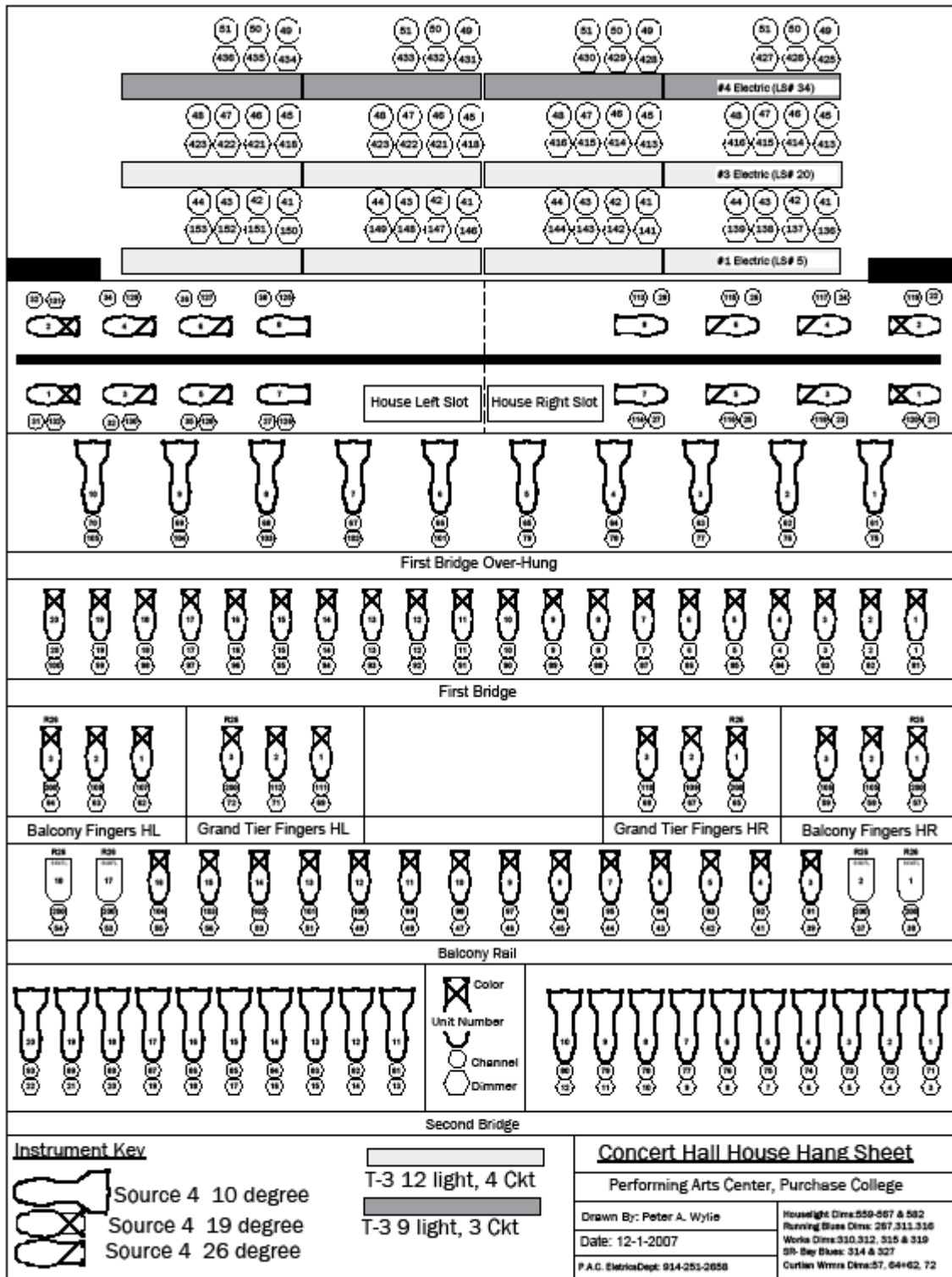
# Lineset Schedule

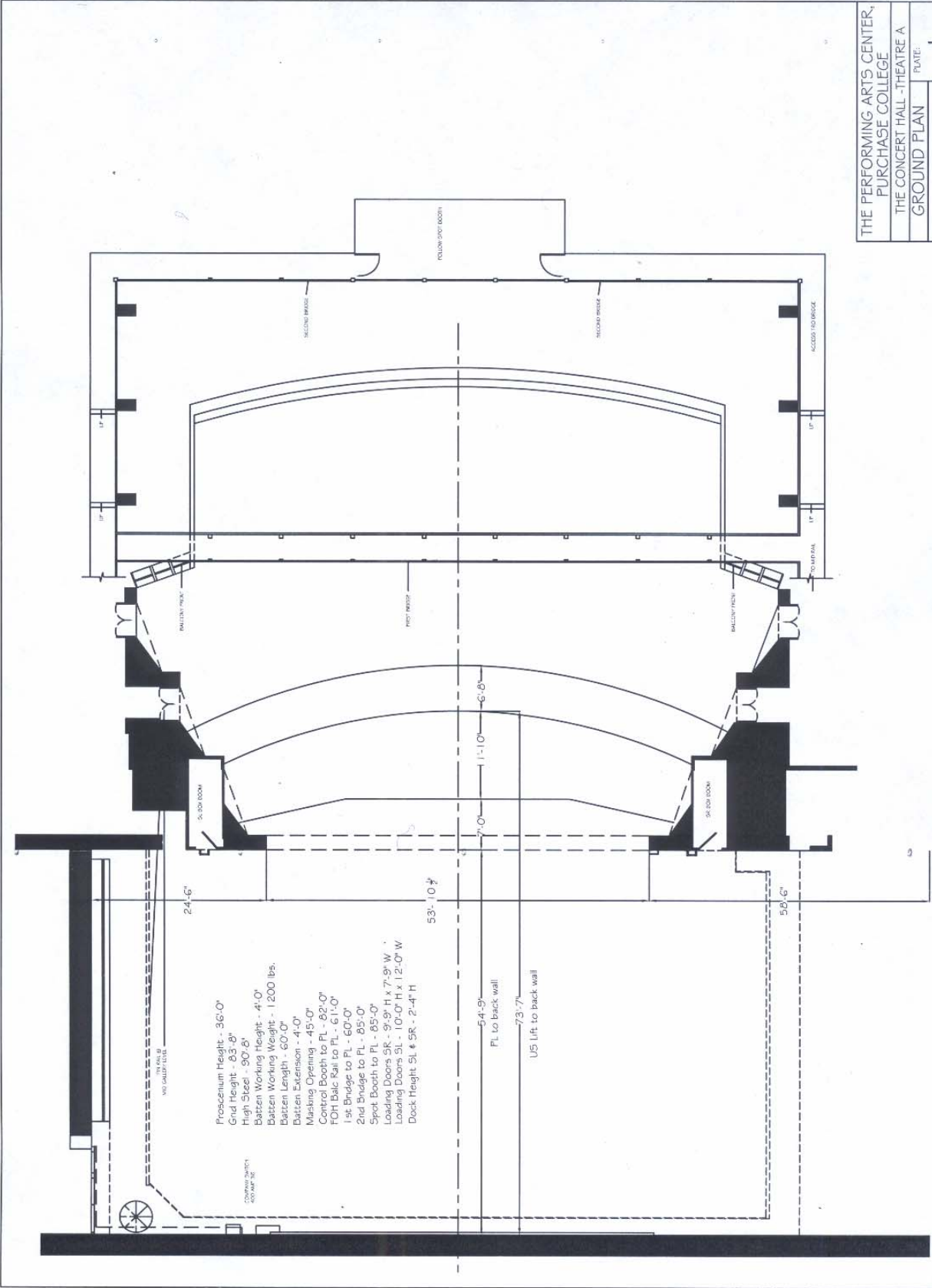
## Theater A - Concert Hall

Event:							Date:						
Note:	House Leg Opening = 45'-0"					Notes:	12 Circuits Per Box = 2 Drop Boxes Per Lineset						
Set	d fr PL	House Hang	Bks		Show Hang	Bks	Set	d fr PL	House Hang	Bks		Show Hang	Bks
0	0'-6"	Main Curtain	32				34	19'-4"	4th Electric				
1	1'-1"	Border #1	12				35	19'-8"					
2	2'-2"	Legs #1	5				36	20'-3"	DEAD			DEAD	
3	2'-10"						37	21'-0"	Drop Box (2)	8			
4	3'-2"						38	21'-7"					
5	3'-6"	1st Electric					39	22'-0"					
6	4'-6"						40	22'-4"	#4 Border	10			
7	4'-11"						41	22'-10"	#4 Legs	5			
8	5'-6"						42	23'-5"					
9	5'-10"	Movie Border	10				43	24'-2"	#3 Ceiling Shell				
10	6'-2"	Movie Legs	5				44	24'-6"	Limited Travel				
11	6'-6"	Moive Screen	5				45	25'-0"	Black Traveler	52			
12	6'-10"	#1 Ceiling Shell					46	25'-6"					
13	7'-9"	Limited Travel	52				47	26'-1"					
14	8'-4"						48	26'-8"					
15	8'-9"	2nd Electric					49	27'-3"					
16	9'-6"						50	28'-6"	5th Electric				
17	9'-9"	#2 Border	10				51	29'-7"					
18	10'-4"	#2 Legs	5				52	30'-3"	#5 Border	10			
19	10'-11"						53	31'-0"	#5 Legs	5			
20	11'-4"	3rd Electric					54	31'-10"	Drop Box (2)	8			
21	11'-10"						55	32'-11"					
22	13'-4"	Blackout	19				56	34'3"	LOUD				
23	13'-11"						57	36'-1"	6th Electric				
24	14'-4"	Drop Box (2)	8				58	37'-9"	#6 Border	10			
25	14'-10"						59	39'-4"	#6 Legs	5			
26	15'-4"	#2 Ceiling Shell					60	40'-11"	Drop Box (2)	8			
27	15'-10"	Limited Travel	52				61	43'-0"	Black Scrim	7			
28	16'-4"	#3 Border	10				62	44'-6"	Drop Box (2)	8			
29	16'-8"	#3 Legs	5				63	46'-5"	R.P. Screen	14			
30	17'-1"	DEAD			DEAD		64	47'-11"					
31	17'-10"						65	49'-8"	Natural Bounce	10			
32	18'-4"						66	51'-10"	Blackout	19			
33	18'-10"												

**Notes:** Shaded Linesets are permanent positions      House Electrics = 12 Ckt. Raceway

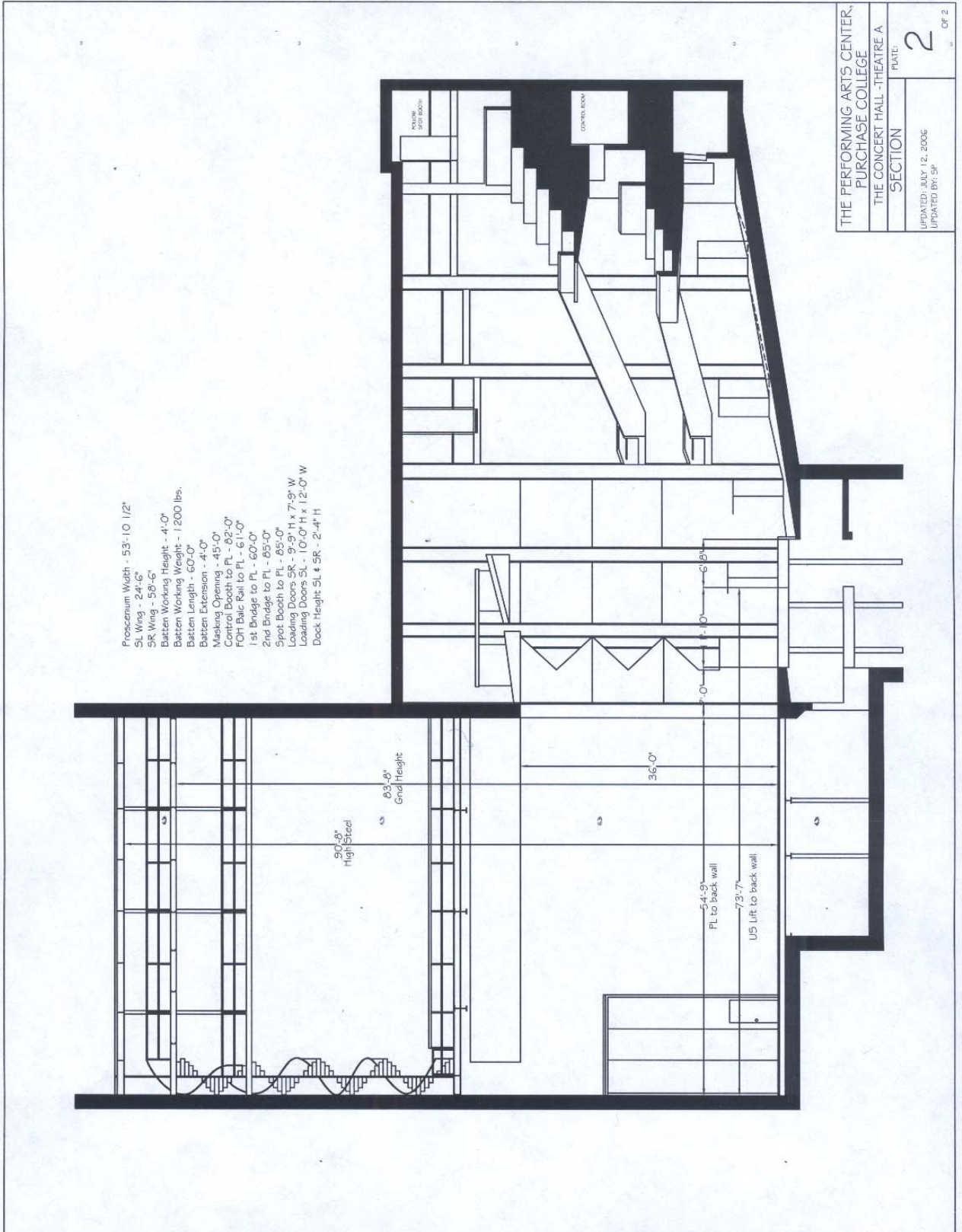
**Please Note:** All measurements subject to change due to periodic line set adjustments





- Proscenium Height - 36'-0"
- Grid Height - 83'-8"
- High Steel - 90'-8"
- Batten Working Height - 4'-0"
- Batten Working Weight - 1,200 lbs.
- Batten Length - 60'-0"
- Batten Extension - 4'-0"
- Masking Opening - 45'-0"
- Control Booth to FL - 8'-0"
- FORBic Rail to FL - 6'-11-0"
- 1st Bridge to FL - 60'-0"
- 2nd Bridge to FL - 85'-0"
- Spot Booth to FL - 85'-0"
- Loading Doors SR - 9'-9" H x 7'-9" W
- Loading Doors SL - 10'-0" H x 12'-0" W
- Dock Height SL & SR - 2'-4" H

THE PERFORMING ARTS CENTER, PURCHASE COLLEGE	
THE CONCERT HALL - THEATRE A	PLATE:
GROUND PLAN	OF 2
UPDATED: JULY 12, 2006 UPDATED BY: SP	



THE PERFORMING ARTS CENTER PURCHASE COLLEGE	
SECTION	PLATE
2	2
UPDATED: JULY 12, 2006 UPDATED BY: SF	
OF 2	